



## Stalker 3D Sensor

### FEATURES

- Affordable and portable
- Measures both speed and distance
- Tracks up to 10 moving vehicles
- Detects stationary targets
- Waterproof and weatherproof
- Low power consumption
- Configurable to specific application
- Made in America
- 2-Year parts and labor warranty

## The Stalker 3D Sensor tracks speed and distance of up to 10 vehicles for Transportation Applications

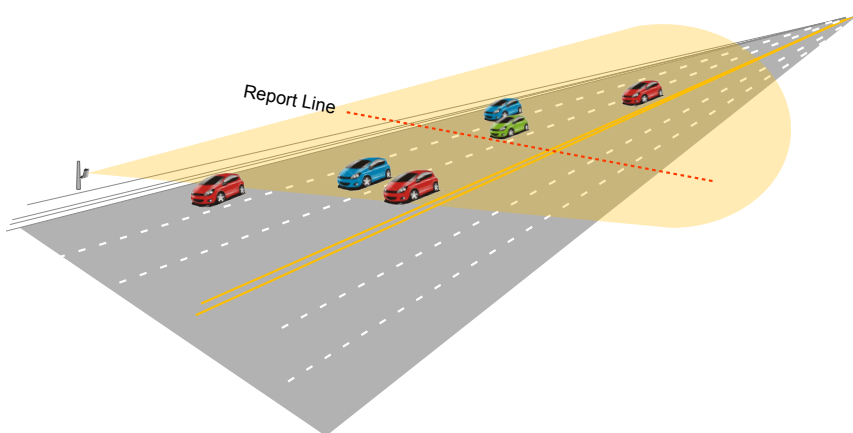
*The world's smallest, highest performance 3D sensor is also the most affordable.*

The Stalker 3D Sensor has many types of speed enforcement applications:

- Red-light enforcement
- Photo speed enforcement
- Tolling applications
- Traffic counting
- Video monitoring
- Incident detection
- And any other application where tracking the speed and position of multiple targets is required.

The Stalker 3D Sensor has a range greater than 500 feet (150 meters) and monitors traffic in any transportation application using Applied Concepts' Advanced Radar Technology. The unique multi-target tracking function tracks up to 10 vehicles and enables speed/distance measurement in fractions of a second.

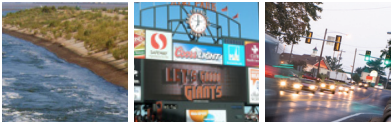
Stalker 3D operates in all weather conditions and is more reliable and less expensive than camera systems, buried loops, or buried sensors. In addition, the equipment is easily moved from site to site.



800-STALKER

**STALKER**® Transportation Sensors

StalkerRadar.com



# Stalker 3D Sensor

**The Stalker 3D Sensor is a full featured radar sensor, providing vehicle tracking and targeting control for photo ticketing systems.**

## Performance

Min range..... 10 Feet (3.05 m)  
 Max range..... >500 Feet (152.4 m)  
 Resolution ..... < 5 feet (1.52 m)  
 Min speed ..... 10 MPH (16.1 km/h)  
 Max speed ..... 200 MPH (321.9 km/h)  
 Speed resolution ..... tenths  
 Directionality ..... approaching, receding  
 Maximum simultaneous vehicles..... 10  
 Target update rate ..... 0.048 Seconds

## Features

- Multi-lane coverage
- Internal real time clock and calendar for time stamping
- Serial or hardware trigger outputs
- Two axis cosine adjustments
- Variable trigger distance
- Up to 3 trigger events per vehicle
- Comprehensive internal self tests

## Communications

Primary ..... RS-485  
 Mode half or full duplex  
 Secondary ..... RS-232  
 Mode: with or without hardware flow control  
 Baud rate ..... 9.6k to 115.2k  
 Serial protocol.....  
 • Vehicle ID, date, time, current speed, max speed, distance, target life, signal strength, alarm state, time to trigger point

## Power

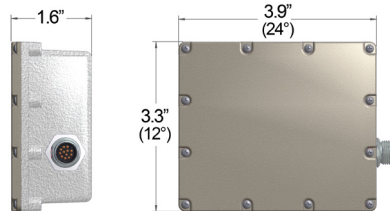
Voltage..... 10 to 48 volts, AC or DC  
 Current (24 volts DC)..... 30 mA  
 Internal Resettable Fuse

## Microwave

Center frequency ..... 24.125 GHz  
 Frequency range ..... 100 MHz  
 Transmit power ..... 10 mW  
 Beam width..... 12° by 24°

## Physical characteristics

Size (LxWxD) excluding connector.. 3.9 x 3.3 x 1.6 inches  
 (9.9 x 8.4 x 4 cm)  
 Weight ..... <15 oz. (.43 kg)  
 Housing ..... Die-cast aluminum  
 Lens ..... Polypropylene  
 Electrical connector ..... M12, 12 pin  
 Mounting ..... 4 x 10-24 UNC



## Environmental

Operating temp..... -34 to +74° C  
 Storage temp ..... -45 to +85° C  
 Ingress rating..... IP67

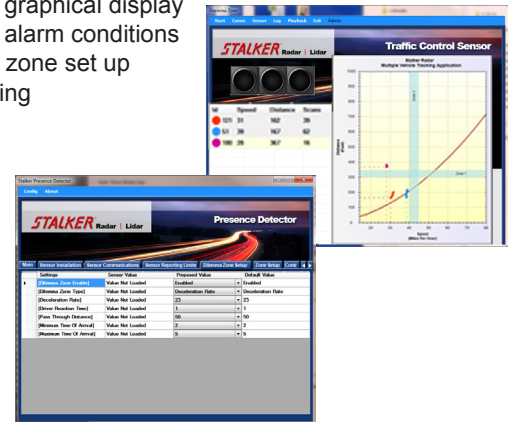
## Pole mount adaptor

- Settable elevation angle
- Settable roll angle
- Built-in sighting tool
- Cable strain relief
- Adapts to Pelco Mounts
- Mounts directly to a pole using steel straps



## PC Application

- Sensor configuration and firmware update
- Real time tabular tracking information
- Real time graphical display
- Real time alarm conditions
- Graphical zone set up
- Data logging



**STALKER**® Transportation Sensors



800-STALKER

applied concepts, inc.

2609 Technology Drive ■ Plano, Texas 75074 ■ 972.398.3780 ■ Fax 972.398.3781

StalkerRadar.com